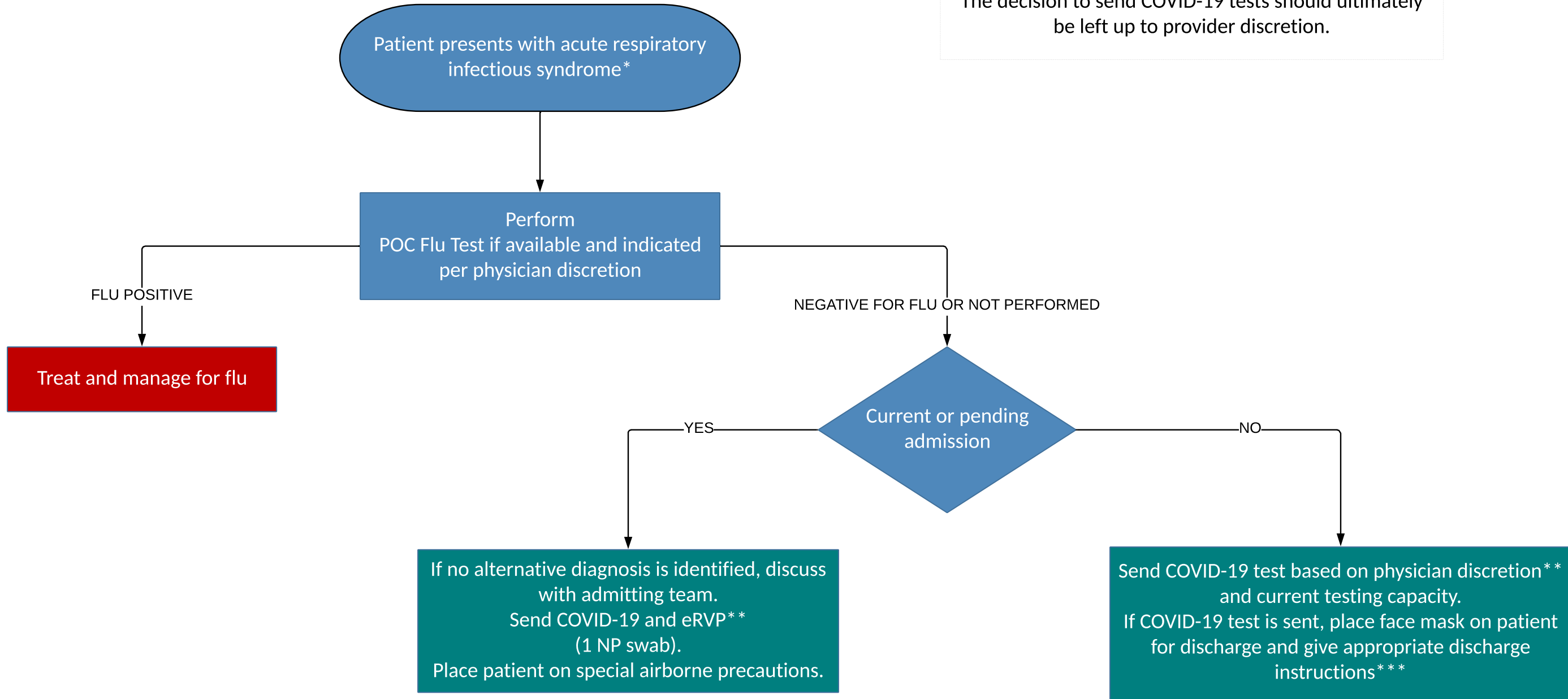


ED & INPATIENT HOSPITAL DAY ≤ 3  
 COVID-19 Decision Tree

The decision to send COVID-19 tests should ultimately be left up to provider discretion.



\* Acute respiratory infectious syndrome includes symptoms such as fevers, chills, cough, congestion, rhinorrhea, headache, myalgias, or sore throat  
 \*\* Providers can cancel COVID-19 tests if alternate diagnosis is made  
 \*\*\* .COVIDAVSINSTRUCTIONS should be given to patients being discharged with a pending COVID-19 test and .COVIDAVSDISCHARGEINSTRUCTIONS should be given to patients with known COVID-19 diagnosis being discharged from the hospital.

POC, Point of Care  
 For more information on isolation and PPE guidance, please see Clinical Guidance and Forms folder:  
**Guidance for HCW PPE During COVID-19 Response**  
 For more information on how to collect COVID-19 samples, please see **Testing Guidance** folder  
 Updated: 4/17/2020

